

HYDROTEC

DRAINAGE CHANNELS

SYSTEM MINI

Drainage channel for landscaping & gardening



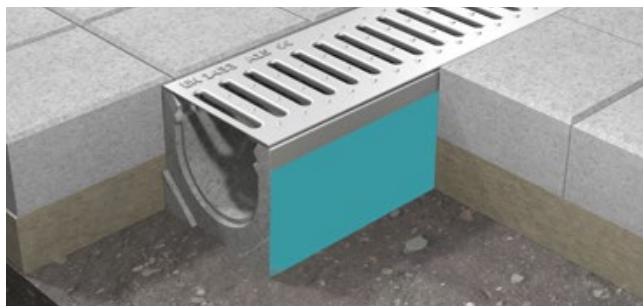
SYSTEM MINI

Product benefits

Problem-free self-installation

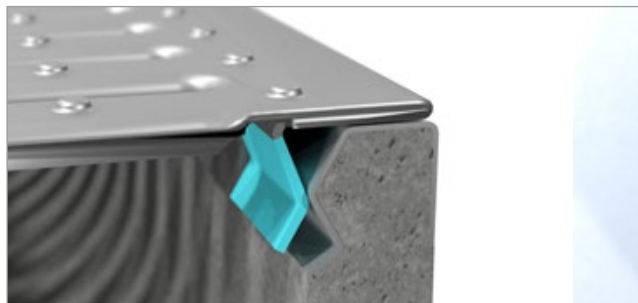
The system MINI to DIN EN 1433 is a simple modular system for problem-free self-installation. The channel does not require a concrete encasement (Type I) and can be asphalted or paved directly up against.

Ideal for house and courtyard areas, pedestrian zones, inner courtyards and car parking areas.



Optimal for paving

The straight external surfaces guarantee an easy and smooth installation.



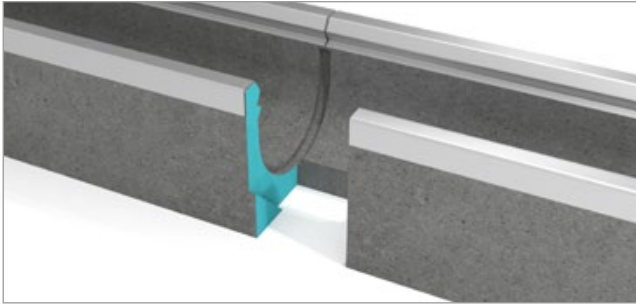
Click-Locking

The gratings can easily be locked with a simple click mechanism on the channel body.



SYSTEM MINI

Product benefits



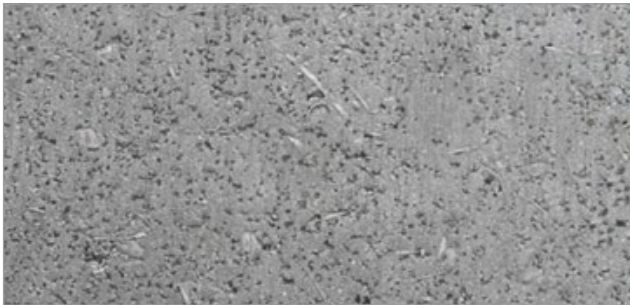
Fitting profile

The elements can easily be joined together at the front sides by means of a sensible profile.



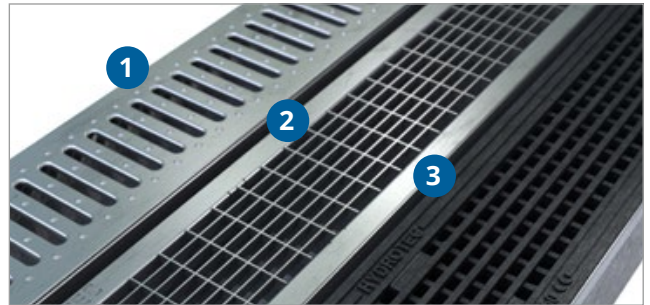
Vertical outlet

Optionally with factory-made bore Ø110 for PP pipe Ø100 for connection to the underground pipe.



Channel body

The drainage channel body is made of fiber reinforced concrete (concrete strength class C35/45).



Gratings

1. Slotted grating galvanised (A 15)
2. Mesh grating galvanised (B 125)
3. Iron slotted grating (C 250)

HYDROTEC

SYSTEM MINI

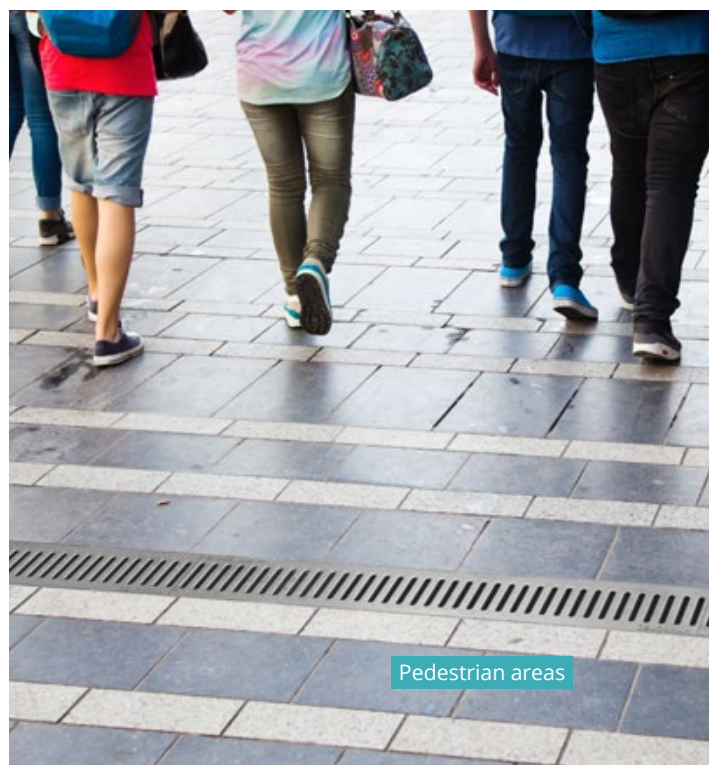
Installation areas



House and courtyard

SYSTEM MINI

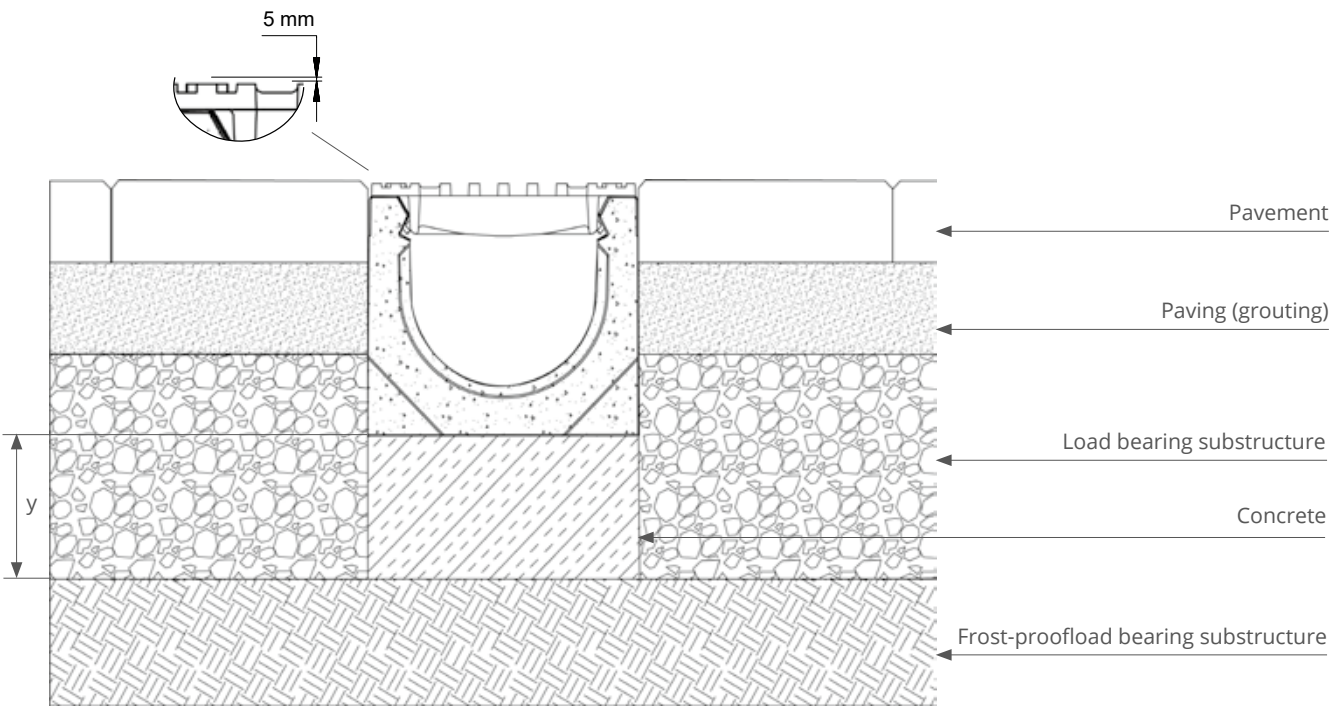
Installation areas



SYSTEM MINI

Installation instructions

PAVEMENT



The edge protector in the drainage channel must be permanently seated approx. 5 mm lower than the adjoining surface.

The paving must be installed in such a way that dynamic shearing forces do not affect the channel sides. This is achieved by a non-positive bond of the paving.

y (according to calculation)

A 15	10 cm concrete C25/30
B 125 / C 250	15 cm concrete C25/30

General notes

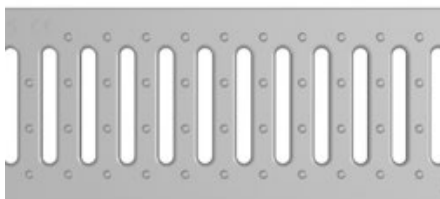
The installation instructions are only provided as a recommendation. The construction companies charged with installation can naturally incorporate any of their own improvements. The construction company is responsible for the correct installation of the drainage channels.

All installed parts must be examined before installation to ensure that they are undamaged. For reasons of liability never install damaged parts and contact the supplier immediately to submit a claim.

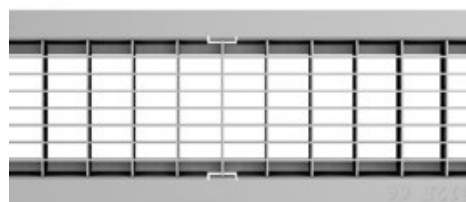
SYSTEM MINI

Gratings

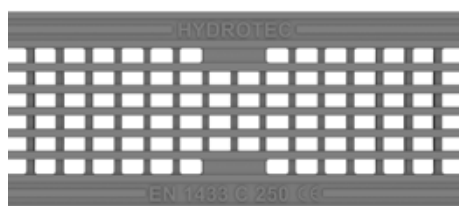
1



2


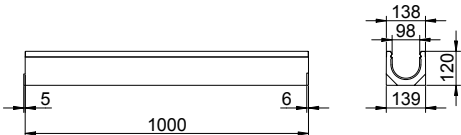

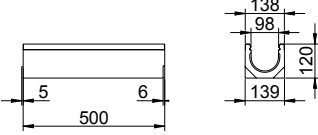

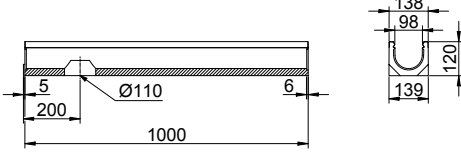

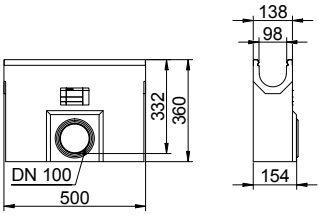


3





Type		Art. no.	Class	Nominal width (mm)	Length (mm)	Inlet area cm²/m
1	Slotted grating (galvanised)	03153 011	A 15	100	1000	280
		03153 015			500	
2	Mesh grating 17/32 (galvanised)	03253 011	B 125		1000	848
		03253 015			500	
3	Iron slotted grating	03353 115	C 250			450

SYSTEM MINI
Channel body

<p>Basic element</p> <p>Art. No. 064103000</p>		
<p>Basic element</p> <p>Art. No. 064103005</p>		
<p>Vertical outlet factory-made bore Ø110</p> <p>Art. No. 064103010</p>		
<p>Feed box with sealing ring Ø100 and dirt catcher</p> <p>Art. No. 0641030081</p>		

SYSTEM MINI

Accessories

Type	Art. No.		
End piece	7001 600		
Pipe joint DN 100	7002 100	End piece	DN 100



HYDROTEC Technologies AG
Düngstruper Strasse 46
27793 Wildeshausen
Germany

 office@hydrotec.com

 www.hydrotec.com

 +49 4431 9355-0

 +49 4431 9355-99